

Edit Public Visibility

The Edit Public Visibility tool allows you to remove a Current Burnt Area polygon from the public Vic Emergency website if there are sensitivities around showing a fire shape to the community after a significant incident has been deemed safe. This tool replaces the previous Edit Public Approval tool.

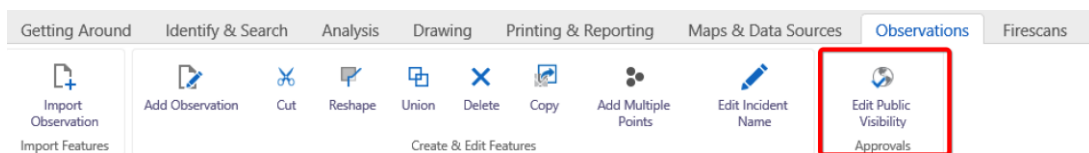
Please note the following:

- The tool can only be run on Current Burnt Area polygons that are assigned to an Incident with a status of 'Safe', unless the incident is interstate*.
- If an incident polygon has been hidden and the incident it is assigned to reverts from a 'Safe' status to 'Going', 'Contained' or 'Controlled', then this polygon will automatically become visible on the public website.
- All Current Burnt Area polygons that are added to the site will be visible on the public website by default, unless the Edit Public Visibility tool is used to 'Exclude' them.
- Excluding a polygon means that the polygon **will not** display on the public website.
- Re-instating a polygon means that the polygon **will** display on the public website.
- The tool cannot be run on 'Temporary' named Current Burnt Area polygons. All fires that need to be visible on the public Vic Emergency website need to be assigned a fire name.

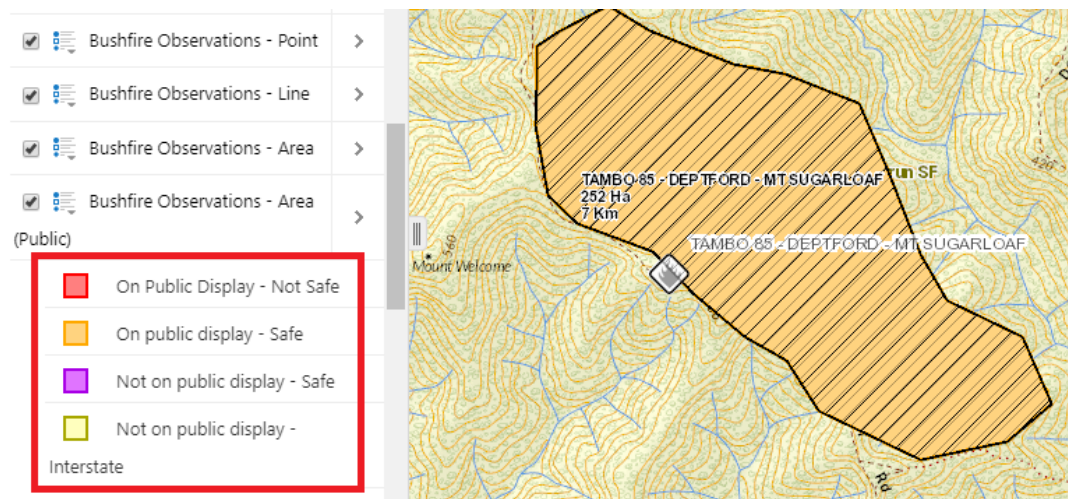
** Only polygons assigned to interstate incidents with a land classification value of 'Interstate' can be excluded.*

To use the Edit Public Visibility tool please follow the instructions below:

1. Open eMap Bushfire and login. Navigate to the Current Burnt Area polygon you wish to edit.
2. Navigate to the Observations Tab and click the **Edit Public Visibility** button.



NOTE: Clicking the button will turn on the Bushfire Observations – Area (Public) layer so this layer will become visible in the Incidents folder. This layer displays the polygons that are and are not candidates for public display on the Vic Emergency website. The content of this layer is influenced by the associated incident status and whether or not the incident is interstate.



Edit Public Visibility – How to

3. Select to either **Exclude** or **Re-instate** a Current Burnt Area polygon for public display, or **Cancel** the workflow. Please select a Current Burnt Area polygon for a single incident.

Edit Current Burnt Area Public Visi...

The Edit Public Visibility tool is used to Exclude or Re-instate the visibility of Current Burnt Area polygons on the public website. This can only apply to polygons assigned to incidents with a burn status of 'Safe', unless the incident is interstate.

PLEASE ENSURE you only select a Current Burnt Area polygon for a single Incident.

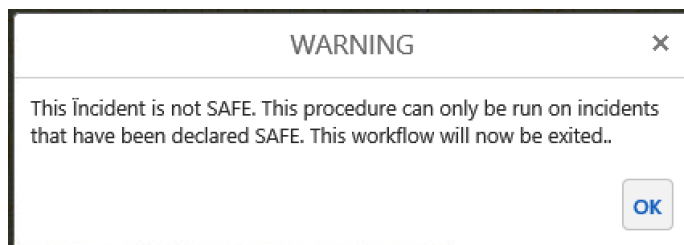
Note: YOU ARE USING PRODUCTION EMAP. ANY CHANGES MADE WILL UPDATE THE PUBLIC WEB SITE. There is no guarantee that previously excluded polygons will not later become visible in the public website.

Do you want to Exclude, or Re-instate a Current Burnt Area polygon for public display?

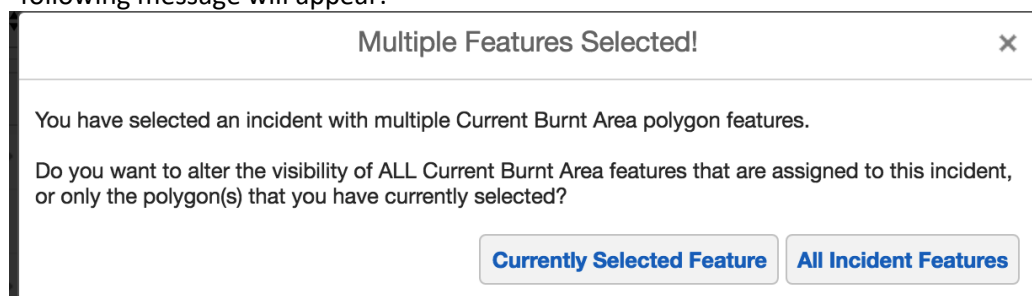


4. Select the feature(s) that you wish to exclude/re-instate.
NOTE: Select by multi-point is on by default, so you will need to double click to finish the selection.

If you select a polygon that is assigned to an incident with a status other than 'Safe', the below alert will appear and the tool will exit without making any changes:



5. If you have selected a polygon from an incident that has more than one polygon, the following message will appear:



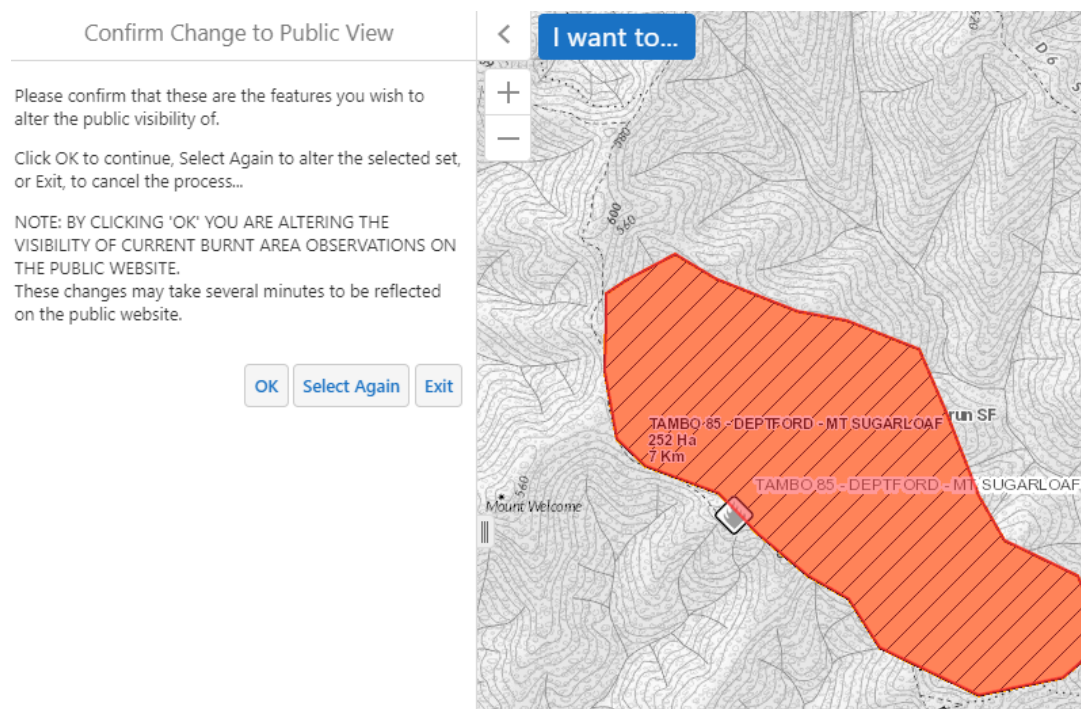
You can either choose to exclude/re-instate all Current Burnt Area polygons associated to that incident (**All Incident Features**), or just the polygon you have selected (**Currently Selected Feature**).

Edit Public Visibility – How to

NOTE: If you accidentally select two polygons from two separate incidents, and both incidents have more than one polygon assigned to them, you will only be able to alter the visibility of the two individual polygons that you currently have selected. You would then need to identify the remaining polygons associated with the incident(s) to alter the visibility of them separately.

6. Your selected feature(s) will be highlighted in red on the map. You will then be asked to confirm by selecting the **OK** button. If you are unsure whether you have selected the correct polygon(s), you can opt to **Select Again**, or **Exit** the tool.

IMPORTANT NOTE: By confirming your selection, you are editing Production data and altering the visibility of Current Burnt Area polygons on the public Vic Emergency website.



7. Once you have clicked OK the workflow will exit, and the changes will flow through to the Vic Emergency website. Note the changes may take several minutes to be reflected on the public website.