

Preparing Garmin .gpx files for use with eMap Web

Regional GIS Services
DEPI – Hume Region
Feb 2014

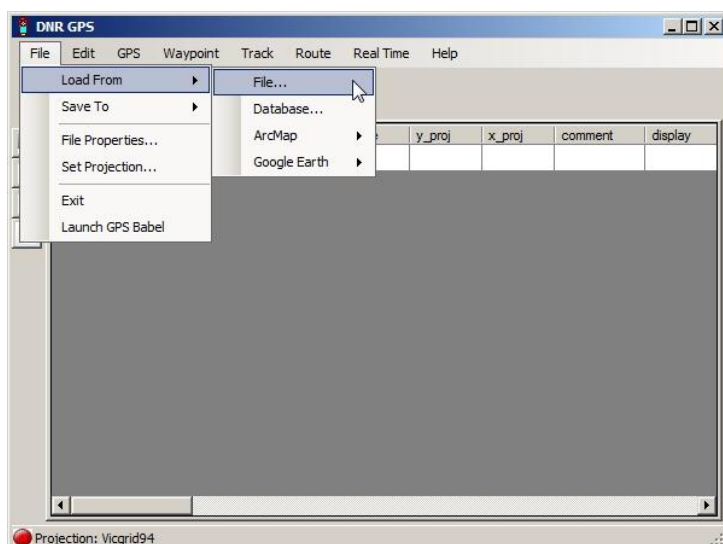
The following method has been developed and tested specifically for DEPI One Desktop computers, and has been shown to work with both Standard and Open Workplace machines. This method has not been tested with computers from other NEOs. Please contact your IT Services group for assistance.

1 Download and install DNRGPS

- Copy the *DNRGPS* folder from *R:\60-Reference\Mapping\Software* to *C:\Data*
- Within this folder sits a file called *dnrgps.exe*. Right-click on this folder and Send to > Desktop to create a shortcut. Double click to open.
- DNRGPS is also available at Fireweb > Mapping > GPS Tab > [DNR GPS Install](#)
- DNRGPS should work on either Standard or Open Workplace computers.

2 Open GPX file and save to SHP file

- File (top left) > Load from > file > navigate to the GPX file
- File (top left) > Save to > file > navigate to the location you want to save into and give it a name
- Note: When opening or saving a file, you will need to specify the file type in the selector (bottom RH corner of the dialog box)

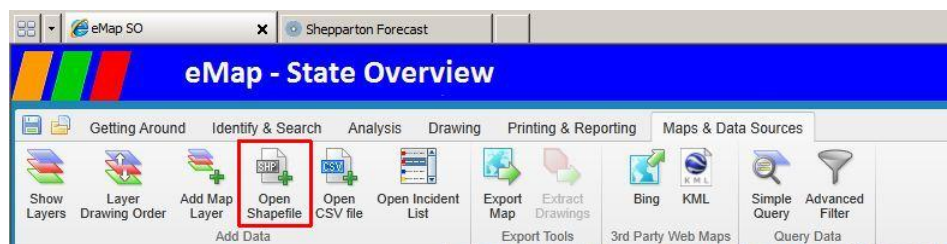


Preparing Garmin .gpx files for use with eMap Web

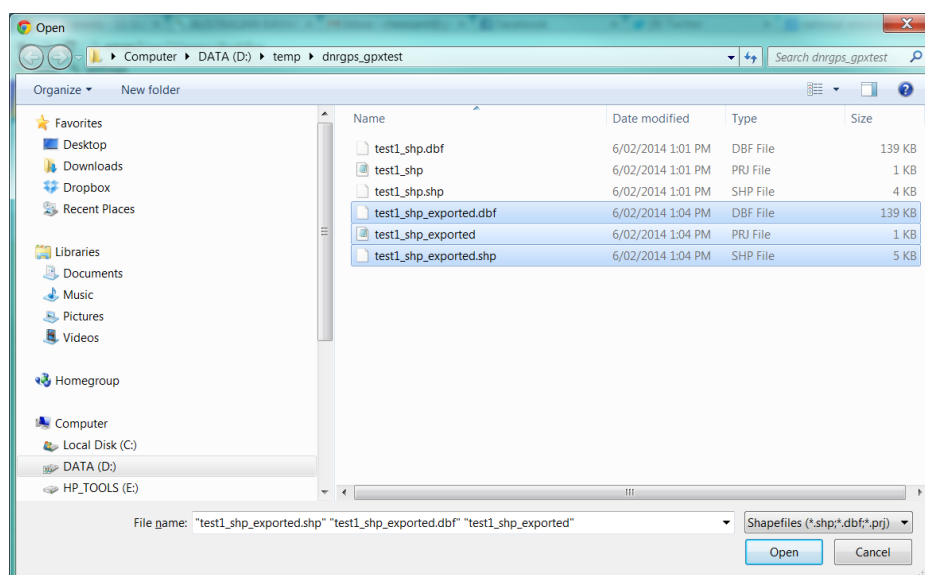
Please note: There is currently a known fault when trying to convert .gpx waypoint files for use in eMap Web. Please refer to Information Sheet (Error opening point shapefiles with eMap) for further information, or contact a Regional GIS Services team member for assistance.

3 Open in eMap

- Open eMap.
- Go to Maps & Data Sources tab on the toolbar. Choose “Open Shapefile.”



- Navigate to the file location and select the shapefile. It is good practice to select all associated files (including .dbf, .shp & .prj). Use CTRL or Shift to enable you to select multiple files.



- If successfully loaded, the shapefile will appear at the bottom of the Map Layers list on the Table of Contents.

4 Zoom to File Location

- Click on file in Map Layers and then ‘Zoom to Extent’.

5 Contact details

Regional GIS Services – Hume Region:

Craig Hamilton 02 6043 7976

Anthony Cheesman 02 6043 7920

Vanessa Giles 02 6043 7939

Refer to <http://gigis/> for Regional GIS Services team members in other Regions.