

27 May 2016

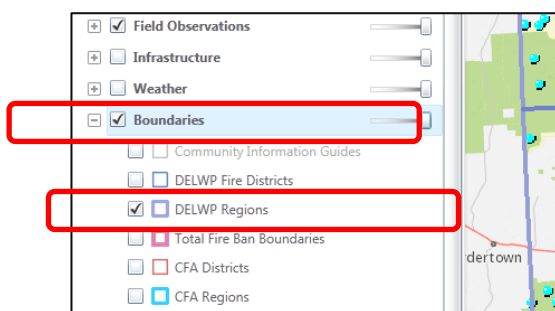
Introduction

The Community Advisory Map tool, allows you to create a map for use in **Community Engagement** around proposed planned burns. This tool allows the user to select a group of burns and create a locality map and specific individual burn maps.

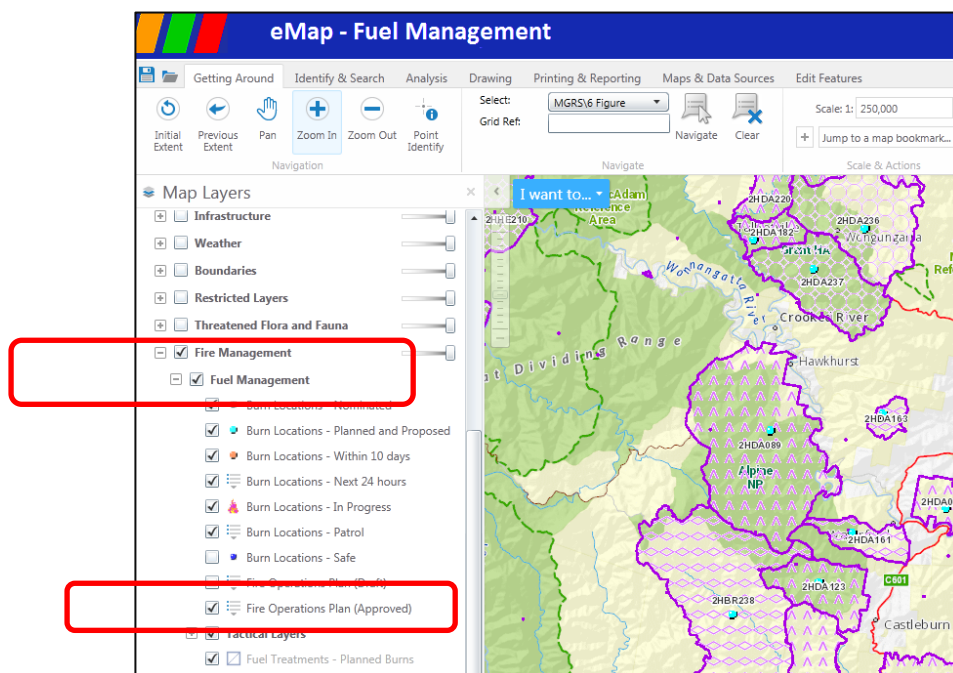
The Community Advisory Map easily allows Engagement Officers to provide tailored information to the public on planned burns in their area.

How to create a Community Advisory Map

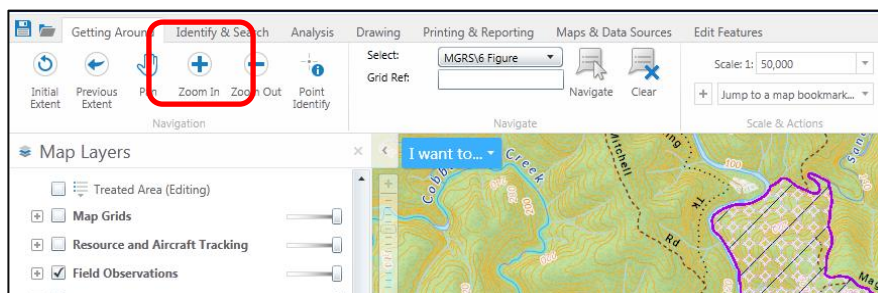
1. Log into eMap Fuel Management, *ensure to open the Toolbar and Table of Contents (Information Pane).*
2. Make sure that the **DELWP Regions** layer and the **Fire Operations Plan (Approved)** layer are both visible in the Table of Contents
 - a) Expand and tick on the **Boundaries** layer
 - Tick on the **DELWP Regions** layer



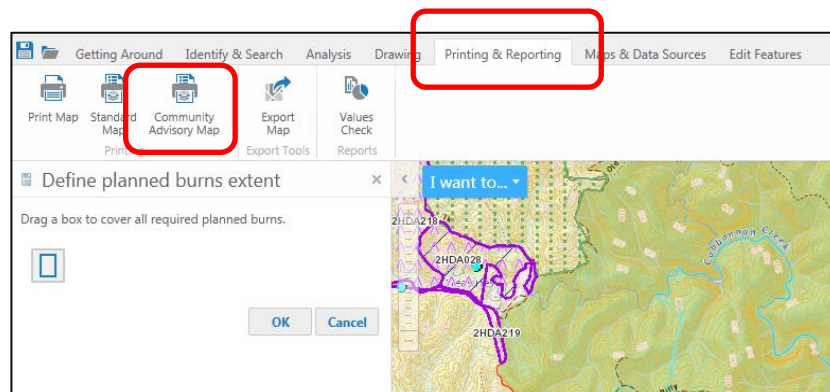
- b) Expand and tick on the **Fire Management** layer
 - Expand and tick on the **Fuel Management** layer
 - Tick on the **Fire Operations Plan (Approved)** layer



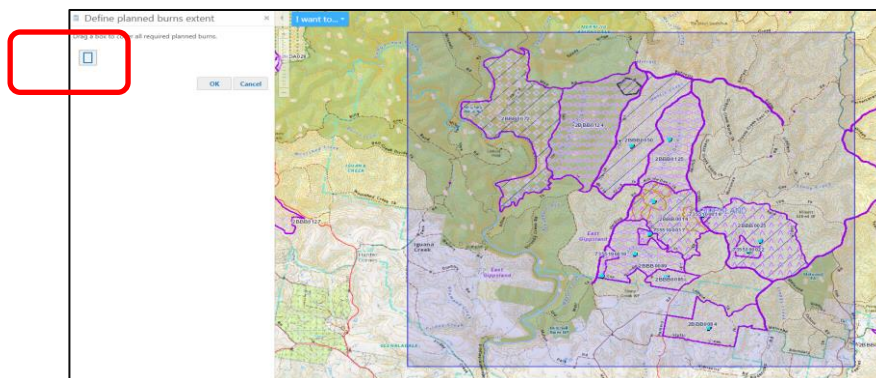
3. **Zoom In** into the 'Area of Interest' where planned burns are to be conducted.



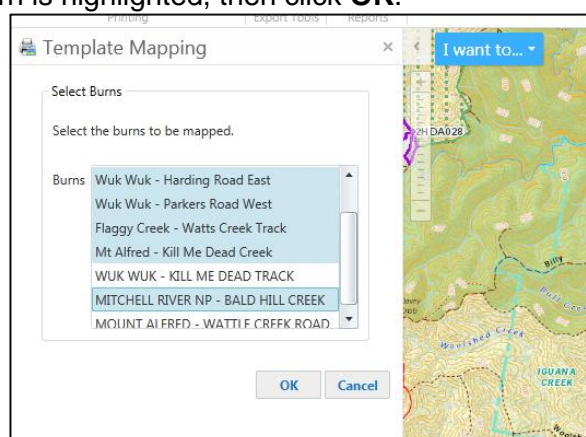
4. Select the 'Printing and Reporting' tab and click the 'Community Advisory Map' button.



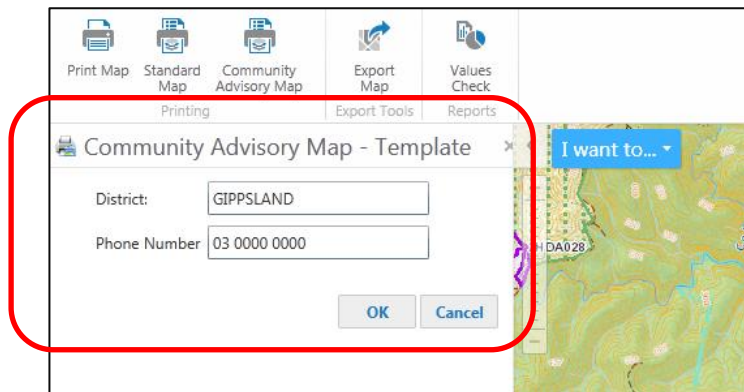
5. The **Select by rectangle** icon should already be active (grey).
- Click on the map and drag the mouse to create a box on the map, to define the area that bounds the planned burns to be mapped. Then click **OK**



6. Select the individual burns to be mapped in the dialog box. Selected burn names will be highlighted in blue. Ensure at least one burn is highlighted, then click **OK**.



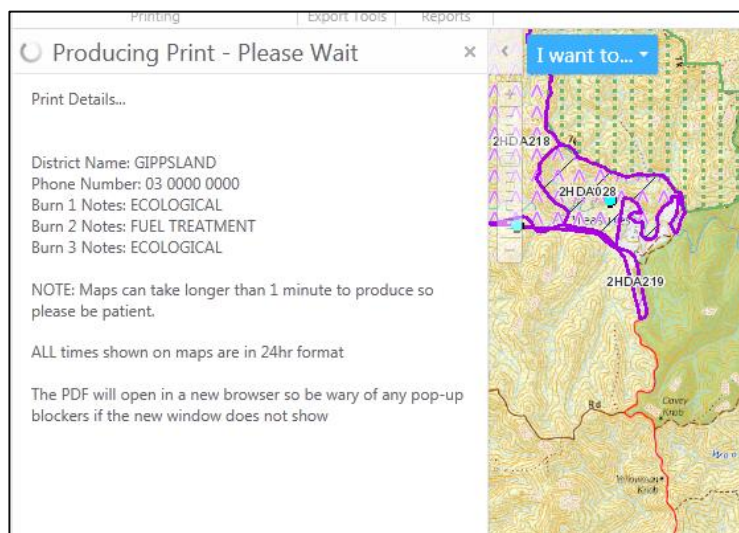
7. Enter the DELWP District / Region Name and the Region's public information phone number. Click **OK**.



8. Enter the Burn Purpose for each of the selected Burns to be mapped. Click **OK**



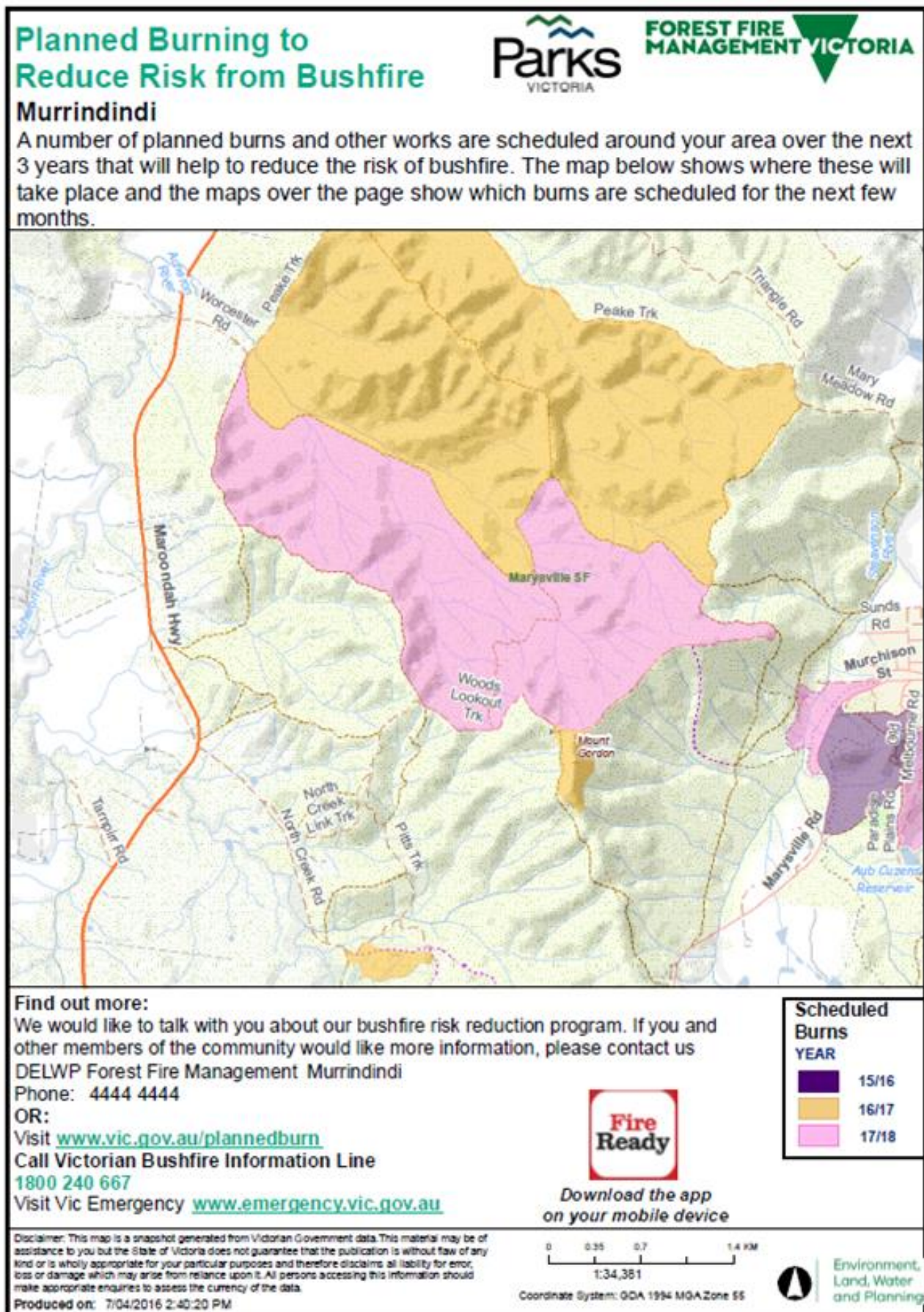
9. The map production process will begin. This may take a minute or two, so please be patient. The PDF will open in a new window so be wary of any pop-up blockers if this window does not appear.



10. The new window should contain the PDF output, which contains the following Community Advisory Maps:
- First page shows an A4 size Overview Map of all the selected planned burns, *refer to Map 1*
 - the following page(s) display an A5 size map of each individual burn (including the Burn Name, Burn Size and Purpose of Burn) - *refer to Map 2*

Example of the Community Advisory Map PDF

Map 1



Map 2

These burns will be prepared and completed in the near future. You may see preparation works being undertaken before we ignite the burn. A planned burn can only take place when weather and fuel conditions are suitable.

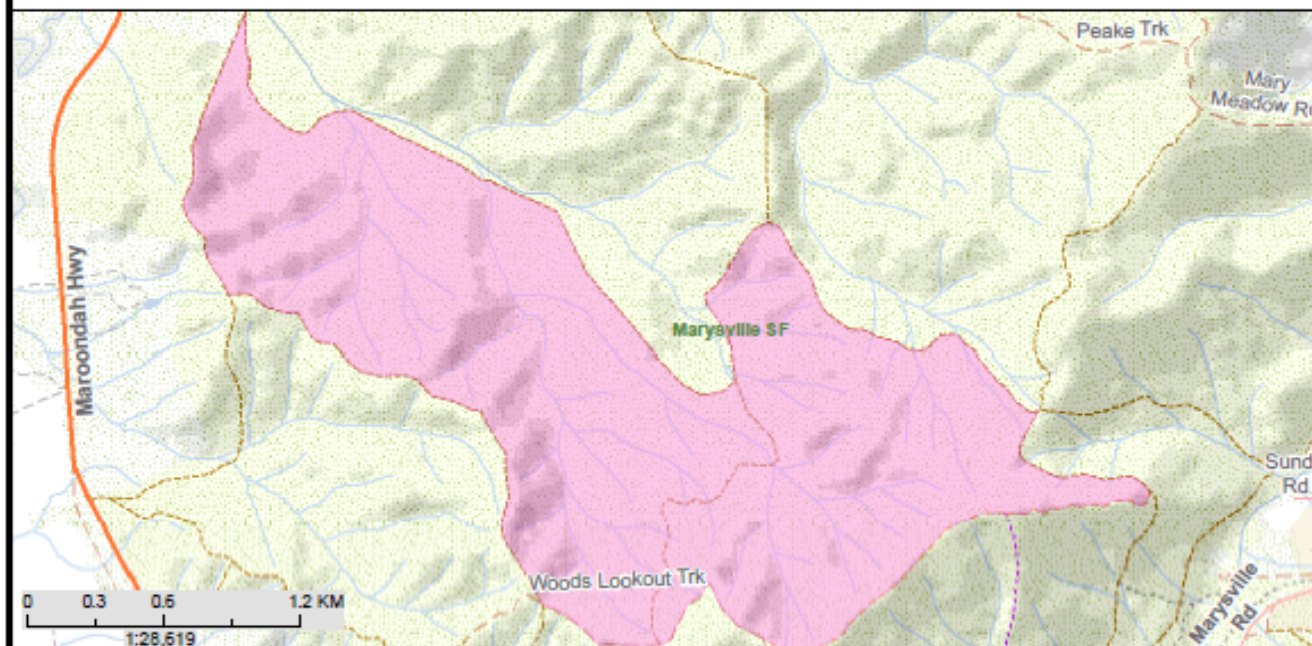
FOREST FIRE MANAGEMENT VICTORIA

Parks
VICTORIA

Burn Name: **Marysville Eastaugh Rd**

Burn Size: **446.90** hectares

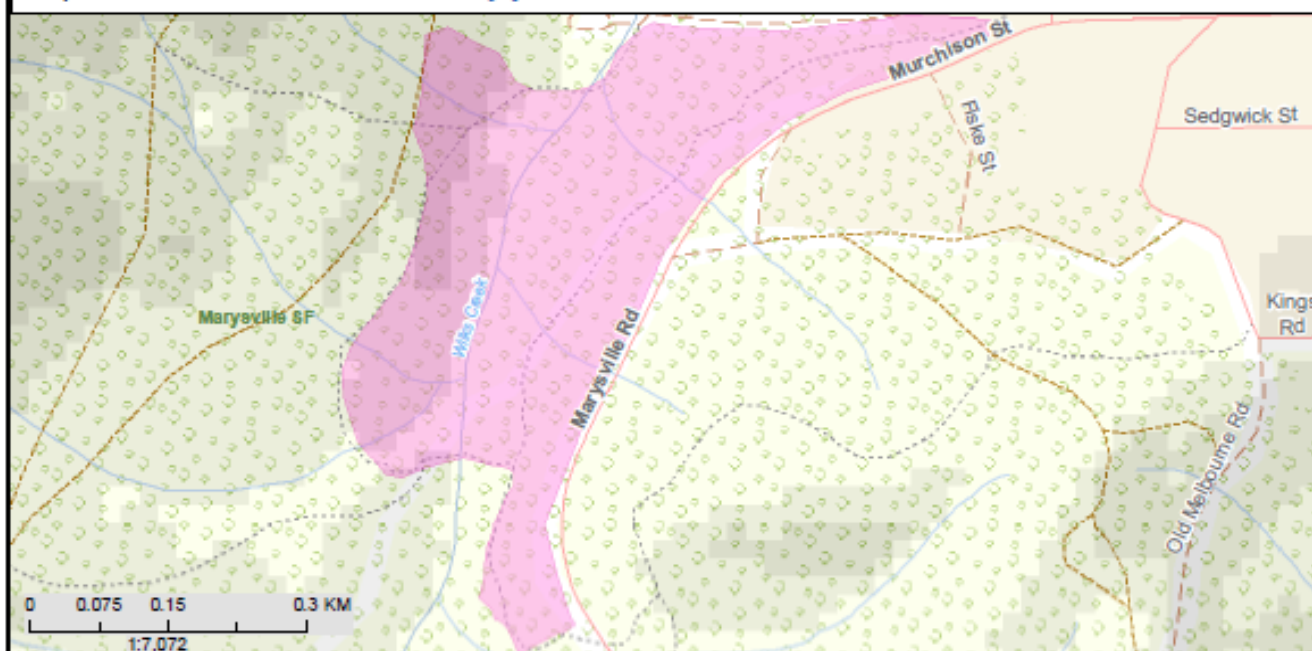
Purpose of burn: **FUEL REDUCTION** rry



Burn Name: **Marysville Gilberts Gully**

Burn Size: **17.20** hectares

Purpose of burn: **FUEL REDUCTION** rry



Disclaimer: This map is a snapshot generated from Victorian Government data. This material may be of assistance to you but the State of Victoria does not guarantee that the publication is without flaw of any kind or is wholly appropriate for your particular purposes and therefore disclaims all liability for error, loss or damage which may arise from reliance upon it. All persons accessing this information should make appropriate enquiries to assess the currency of the data.

www.delwp.vic.gov.au



Environment,
Land, Water
and Planning

Produced on: 7/04/2016 2:40:50 PM

Coordinate System: GDA 1994 VICGRID94