

## How To - Use the RATS data within FireWeb - Part 1: Access the data

### BACKGROUND

R.A.T.S is an acronym for Resource and Aircraft Tracking System. Fire Management fit same dozers and all contract aircraft with a GPS to record their spatial movements. The latest track of each dozer and aircraft is available as a shape file on FireWeb. These shape files are generated very night from information entered into FireWeb. The positional accuracy of the data is 100K scale, +/- 100m.

### HOW DO I ...?

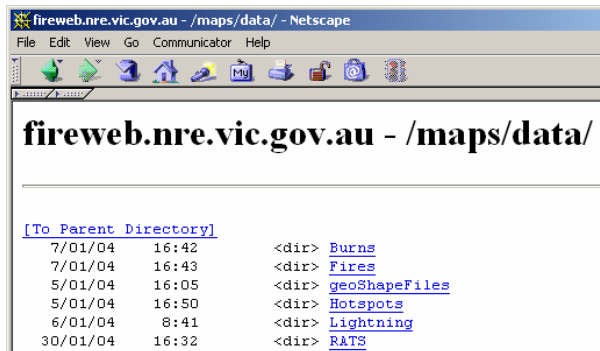
#### ACCESSING THE RATS DATA

1. Start Internet Explorer browser.
2. Enter <http://fireweb.nre.vic.gov.au/maps/data/> in the address bar (as shown).



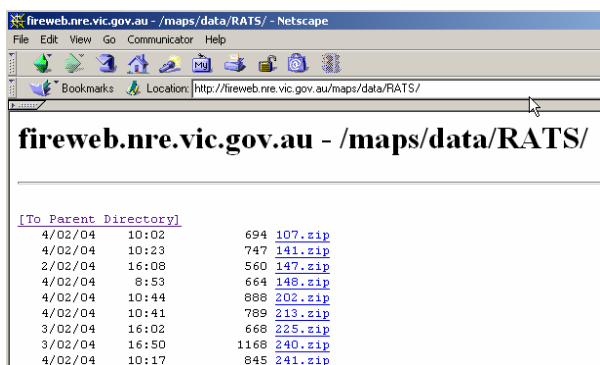
3. Press the Enter key.

*The fireweb/maps/data website will appear.*



4. Click [rats](#).

*The RATS data will appear.*

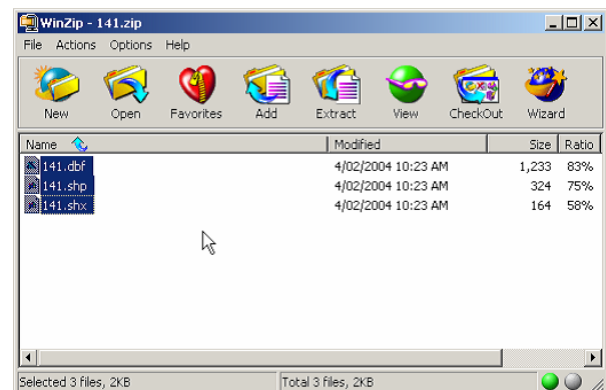


**Note:** There is one file per RAT (dozer or aircraft). This file will contain track data for the last day the RAT reported a position - check dates carefully.

5. Place the cursor over the required file(s) and click the left mouse button.
6. Select Save As...and copy the files to your local drive.

#### ACCESSING THE RATS DATA WITHIN THE ZIP FILE

7. Once you have down loaded the zip file you will need to extract the compressed files within the zip file via the use of winzip. An evaluation version of Winzip can be found at: [www.winzip.com](http://www.winzip.com).
8. Navigate to the zip file, place the mouse cursor over the file and double click the left button.
9. Highlight the files you wish to extract by placing the mouse cursor over the files, clicking the left mouse button and holding down the shift button (as shown).



---

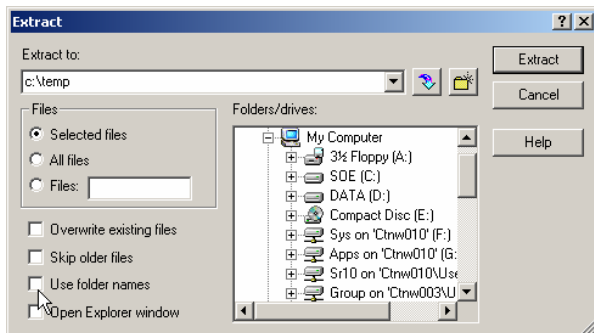
## How To - Use the RATS data within FireWeb - Part 1: Access the data

---



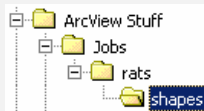
10. Click **Extract**.

11. Navigate to where you wish the files to be placed and remove the tick from the Use folder names option as shown below.



12. Click **Extract**.

**Note:** When you extract the RATS data files, they will be placed in new folders that are automatically created. These folders are:



➤ For example, if you extracted the files to c:\temp, they would end up being stored in c:\temp\Jobs\rats\shapes

**Note:** FireWeb data, including RATS, are provided in AGD66 geographic projection.