

How To - Use the Lightning and Hotspot data - Part 1: Access the data

BACKGROUND

Lightning and Sentinel hotspot data is available for use from Fireweb. The lightning data is provided from a commercial data provider Global Position and Tracking Systems Pty Ltd (www.gplats.com.au) while the Hotspot data is from the sentinel CSIRO service (www.sentinel.csiro.au).

HOW DO I ...?

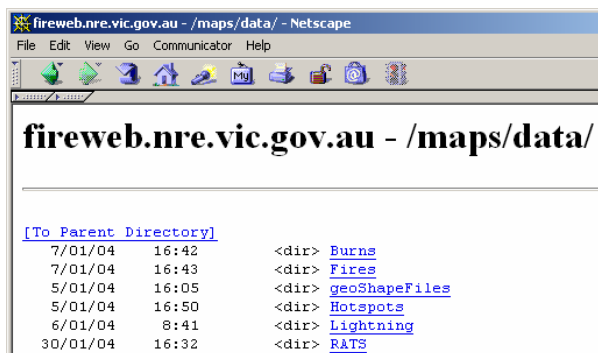
ACCESSING THE LIGHTNING DATA

1. Choose , **PC Applications, Netscape Communicator.**
2. Enter <http://fireweb.nre.vic.gov.au/maps/data/> in the address bar (as shown).



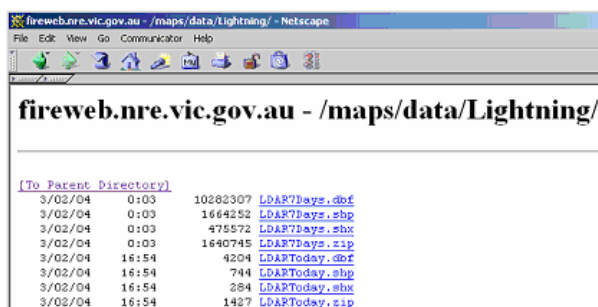
3. Press the Enter key.

The fireweb/maps/data website will appear.



4. Click [Lightning](#).

The lightning data will appear.



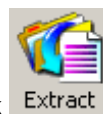
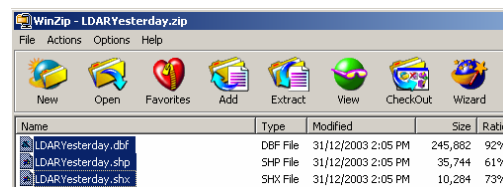
Note: There are two sets of shape files:
7days – generated at midnight, contains data for the last seven days.
Today – generated every hour, contains data for today so far.

You can either down load the 3 individual shape files or a zip file containing the 3 individual shape files.

5. Place the cursor over the required file(s) and click the left mouse button.
6. Select Save As...and copy the files to your local drive.

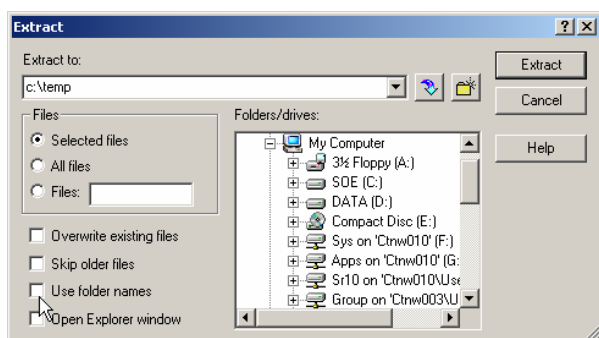
ACCESSING THE LIGHTNING DATA WITHIN THE ZIP FILE

1. If you have down loaded the zip file you will need to extract the compressed files within via the use of winzip. An evaluation version of Winzip can be found at: www.winzip.com.
2. With Winzip installed on the PC, navigate to the zip file, place the mouse cursor over the file and double click the left button.
3. Highlight the files you wish to extract by placing the mouse cursor over the files, clicking the left mouse button and holding down the shift button (as shown).



4. Click **Extract**.
5. Navigate to where you wish the files to be placed and remove the tick from the Use folder names option as shown below.

How To - Use the Lightning and Hotspot data - Part 1: Access the data



6. Click .

Note: When you extract the lightning and hotspot data files, they will be placed in new folders that are automatically created. These folders are:



- For example, if you extracted the files to c:\temp, they would end up being stored in c:\temp\Jobs\Mapping\shapes

ACCESSING THE HOTSPOT DATA

1. Follow the same steps as outlined above, except at step 4 click on the Hotspot directory.

Note: Lightning data is provided in WGS84 geographic projection while hotspot data is provided in GDA94 geographic projection. Where an accuracy of only a metre or greater is required, GDA94 coordinates can be considered the same as WGS84.